



EXAMINATIONS COUNCIL OF ESWATINI
Eswatini General Certificate of Secondary Education

CANDIDATE
NAME

| |
|--|
| |
|--|

CENTRE
NUMBER

| | | | | |
|--|--|--|--|--|
| | | | | |
|--|--|--|--|--|

CANDIDATE
NUMBER

| | | | |
|--|--|--|--|
| | | | |
|--|--|--|--|

FASHION AND FABRICS

6904/01

Paper 1 Theory

October/November 2022

2 hours

Candidates answer on the Question Paper.

Additional Materials: Coloured pencils (not yellow)
Ruler, eraser
Lead Pencil
Pencil sharpener

READ THESE INSTRUCTIONS FIRST

Write your centre number, candidate number and name on all the work you hand in.
Write in dark blue or black pen.

You may use a soft pencil and eraser for diagrams or sketches.
Do **not** use staples, paper clips, highlighters, glue or correction fluid.

Section A

Answer **all** parts in the spaces provided on the question paper.

Section B

Answer any **two** questions in the spaces provided on the question paper.

Section C

Answer **one** question only in the spaces provided.

Do **not** spend more than **40** minutes on each question.
Enter the number of the chosen questions in **Section B** and **C**
in the grid below.

The number of marks is given in brackets [] at the end of
each question or part question.

| For Examiner's Use | |
|--------------------|-------|
| Question Number | Marks |
| Section A | |
| Section B | |
| | |
| Section C | |
| | |
| Total | |

This document consists of **15** printed pages and **1** blank page.

SECTION A

Answer **all** questions in this section in the spaces provided.

1 (a) (i) Identify the style features shown on the drawing of the skirt below:

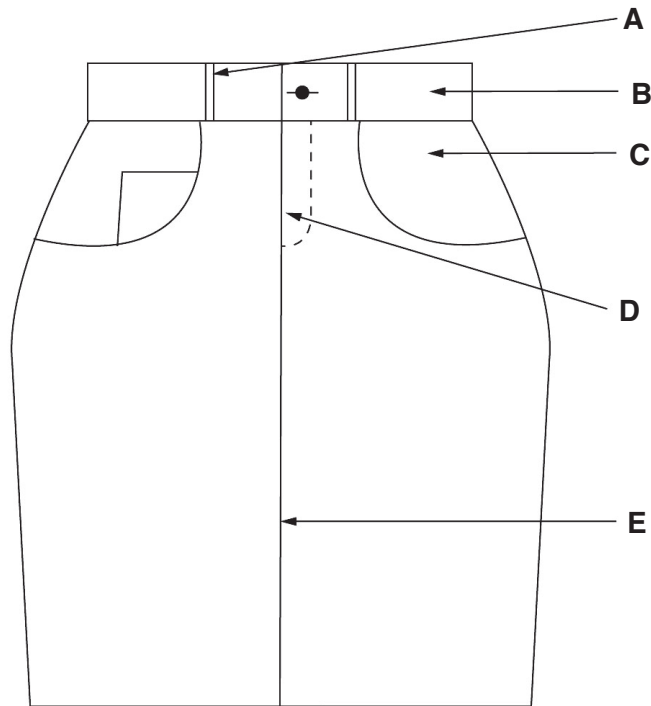


Fig. 1

- A**
- B**
- C**
- D**
- E** [5]

(ii) Identify **two** pattern pieces used to make the skirt in **Fig. 1**.

.....

..... [2]

(iii) The skirt in **Fig. 1** can be made using denim fabric. Describe denim fabric.

- Fibre
- Structure
- Appearance
- Weight [4]

(b) Give **three** disadvantages of using commercial patterns to make garments.

- (i)
- (ii)
- (iii) [3]

(c) State **one** reason for each of the following statements on the care of the sewing tools:

- (i) Seam rippers should be covered with the shields when not in use.
.....
.....
- (ii) Pinking shears should always be sharpened.
.....
.....
- (iii) Fabric scissors should not be used to cut paper.
.....
..... [3]

(d) Describe how each of the following sewing machine attachments is used.

- (i) Button foot
.....
.....
- (ii) Zipper foot
.....
.....
- (iii) Narrow hemming foot
.....
..... [3]

(e) Explain the following terms used in the processing of fibres and give an example of a fibre for each process.

(i) Retting

.....
.....
.....

Example [3]

(ii) Carding

.....
.....
.....

Example [3]

(f) Draw **four** pattern markings you would expect to find on the sleeve pattern below.

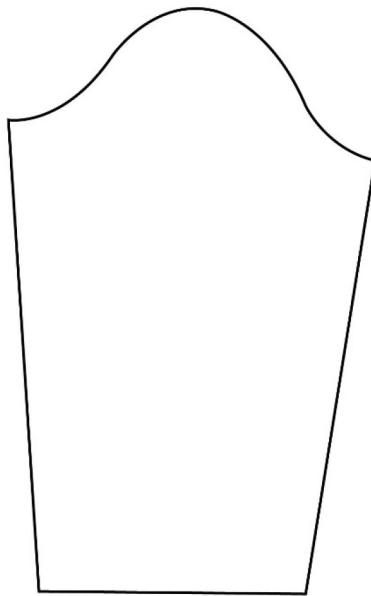


Fig. 2

[4]

(g) Explain how to attach a print patch on a boy's pair of trousers.

.....

.....

.....

.....

.....

.....

.....

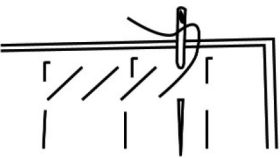
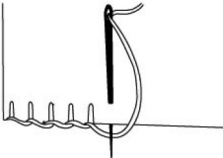

.....

.....

.....

..... [4]

(h) Identify the following hand stitches used in garment construction and state one function of each.

| Stitch | Name | Function |
|--|--|--|
| <p>(i)</p>  | <p>.....</p> <p>.....</p> <p>.....</p> | <p>.....</p> <p>.....</p> <p>.....</p> |
| <p>(ii)</p>  | <p>.....</p> <p>.....</p> <p>.....</p> | <p>.....</p> <p>.....</p> <p>.....</p> |
| <p>(iii)</p>  | <p>.....</p> <p>.....</p> <p>.....</p> | <p>.....</p> <p>.....</p> <p>.....</p> |

[6]

Total Marks [40]

SECTION B

Answer **two** questions in this section.

2 (a) Define the following terms:

(i) Accessories

(ii) Workmanship [2]

(b) State **two** characteristics of a well sewn hem.

(i)

(ii) [2]

(c) Explain why it is important to know your figure type when choosing clothing.
Give examples to support your answer.

.....
.....
.....
.....
.....
..... [4]

(d) Explain the importance of **two** pieces of information found on garment labels other than care symbols.

(i)

(ii) [4]

(e) Explain how mercerisation of fabric and yarn is achieved.

.....
..... [2]

(f) Explain how to sew a French seam. You may use labelled diagrams and notes to support your answer.

.....

.....

.....

.....

.....

.....

.....

.....

.....

.....

.....

.....

.....

.....

.....

.....

.....

.....

.....

.....

.....

.....

[6]

Total Marks [20]

3 (a) Define the term fashion fad.

.....
..... [1]

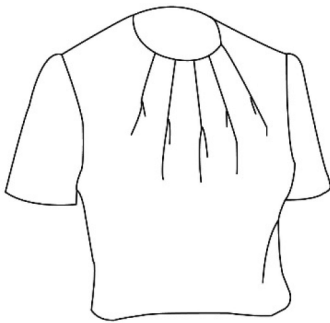
(b) Identify the method used to control fullness in each of the following garments:

(i)



.....

(ii)



..... [2]

(c) Give **three** advantages of using a fabric made from a blend of polyester and cotton rather than a fabric made from 100% cotton.

(i)

(ii)

(iii) [3]

(d) Explain why the following guidelines are important when removing stains.

(i) Remove stains as soon as they occur.

.....
..... [1]

(ii) Test the stain remover on a similar piece of fabric or seam allowance.

.....
..... [1]

(e) Explain why care labels are important in garments.

.....
.....
.....
..... [2]

(f) Explain how warm colours affect the appearance of garments.

.....
.....
.....
.....
.....
..... [3]

(g) Explain how to sew a single pointed dart on a thick fabric. You may use diagrams to support your answer.

.....

.....

.....

.....

.....

.....

.....

.....

.....

.....

.....

.....

.....

.....

.....

.....

.....

.....

.....

.....

.....

.....

[7]

Total Marks [20]

4 (a) (i) Define the term "easing".

.....
..... [1]

(ii) State **one** position on the garment where easing may be applied.

..... [1]

(b) List **three** points to consider when deciding on the type of opening needed in a garment.

(i)

(ii)

(iii) [3]

(c) State **two** types of embellishment suitable for a child's dress.

.....
..... [2]

(d) Give **one** reason for each of the following guidelines for attaching a pocket.

(i) Reinforcing top edges.

.....
.....

(ii) Attach pocket on placement line.

.....
..... [2]

(e) State **two** factors that influence the selection of the following:

(i) Thread

.....
.....
.....

(ii) Interfacing

.....
.....
..... [4]

(f) Explain, using notes and/or diagrams, how to prepare and attach a waistline facing on a polycotton skirt.

.....

.....

.....

.....

.....

.....

.....

.....

.....

.....

.....

.....

.....

.....

.....

.....

.....

.....

.....

.....

.....

.....

[7]

Total Marks [20]

SECTION C

Answer **one** question in this section, either question **5(a)** or **5(b)**

5 **(a)** Discuss factors to consider when evaluating the fit of a garment. [20]

OR

(b) Discuss the choice, use and care of the following types of needlework tools:

(i) Measuring tools

(ii) Pressing/ironing tools

(iii) Cutting tools [20]

.....

.....

.....

.....

.....

.....

.....

.....

.....

.....

.....

.....

.....

.....

.....

.....

.....

.....

.....

.....

.....

.....

.....

A series of horizontal dotted lines for writing.

BLANK PAGE

Permission to reproduce items where third-party owned material protected by copyright is included has been sought and cleared where possible. Every reasonable effort has been made by the publisher (ECESWA) to trace copyright holders, but if any items requiring clearance have unwittingly been included, the publisher will be pleased to make amends at the earliest possible opportunity.